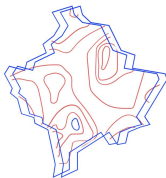




GISPO

Training the future with FOSS4G

Elisa Hanhirova, Gispo Oy



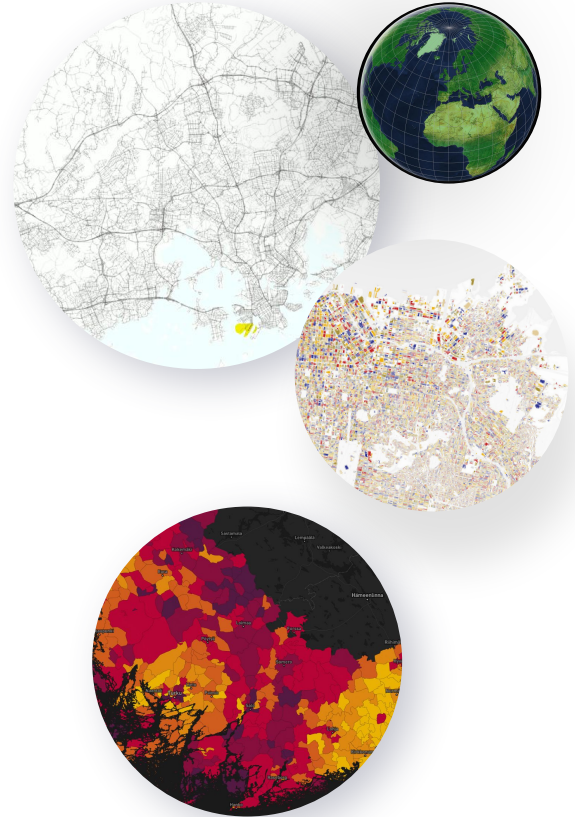
FOSS4G
Prizren, 2023

GISPO



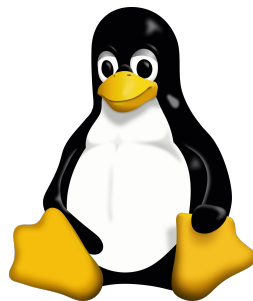
Gispo Ltd.

- Founded in 2012
 - 20+ employees
- **We consult** our customers on how to utilize FOSS4G solutions and open data efficiently
- **We develop** software
 - QGIS plugins and QGIS core
- **We train** our customers in GIS - 100+ organizations and 1000+ people
- **We support** our customers who use FOSS4G
- Open source advocate and capacity building with open source



Status in Finland

- OSS in Finland
 - Linux
 - COSS (2003) and Mindtrek since 2015
- Bigger organisations are switching to FOSS
 - National Land Survey
 - Finnish Environmental Institute
- Municipalities
 - Helsinki
 - Smaller municipalities

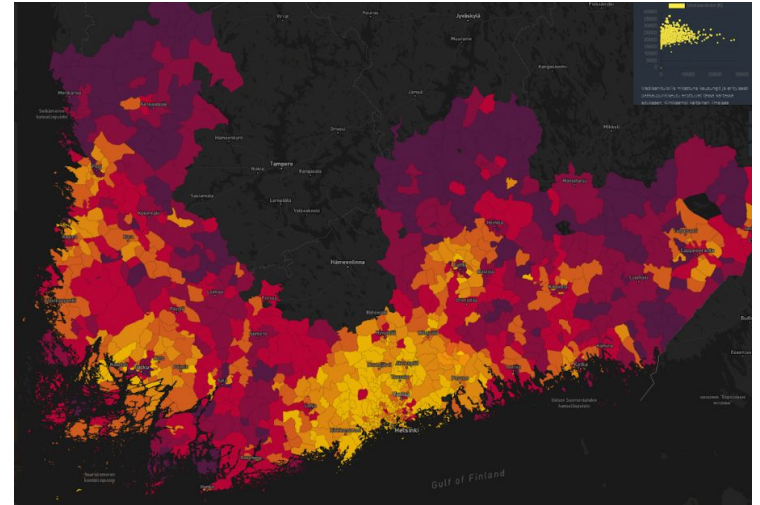
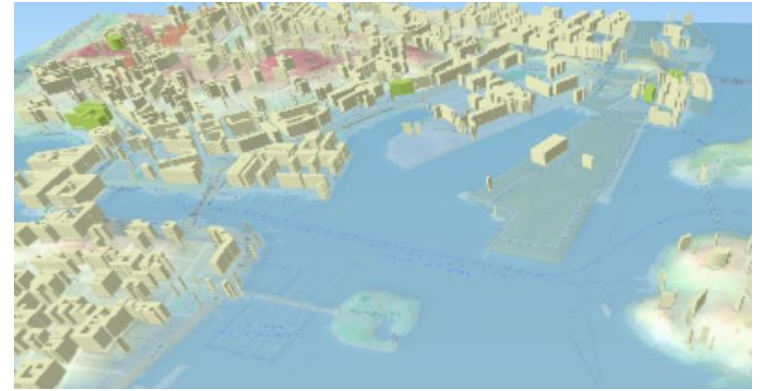


Suomen ympäristökeskus
Finlands miljöcentral
Finnish Environment Institute



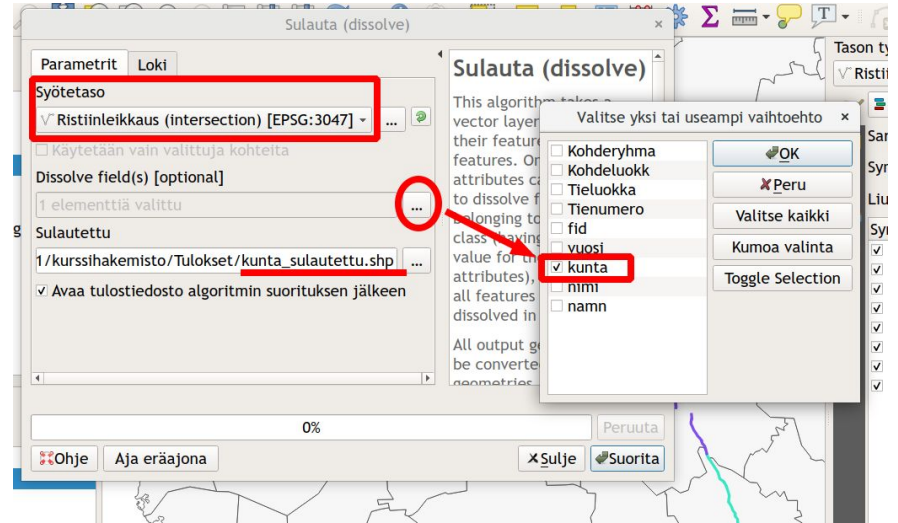
Why training?

- Geographic information is used more widely
 - Knowledge-based management
 - Reports, maps, infographics
- People with different skill levels
 - GIS knowledge/education
 - Software knowledge



Training basics

- What can we offer?
 - Different level courses
 - Tailored courses
 - Different needs
 - Reliability - certification (Kartoza)
 - Developing new tools?
- In site training vs online training



QGIS

What do we need to train?

- Depends on program and the level of knowledge
- Give an understanding of how the softwares work
- Deeper information how tools work
- Best methods
- “Where to find that one button...”





Modules

- Examples from our courses
 - Modules
- Learning paths: Case City of Helsinki
 - Introduction to geographic information and QGIS
 - Statistics and analyses
 - Planning and editing in QGIS

Good practices

- Do it yourself
- Demoing in different levels
- Ask if you don't know
- Remember that you also learn while teaching!



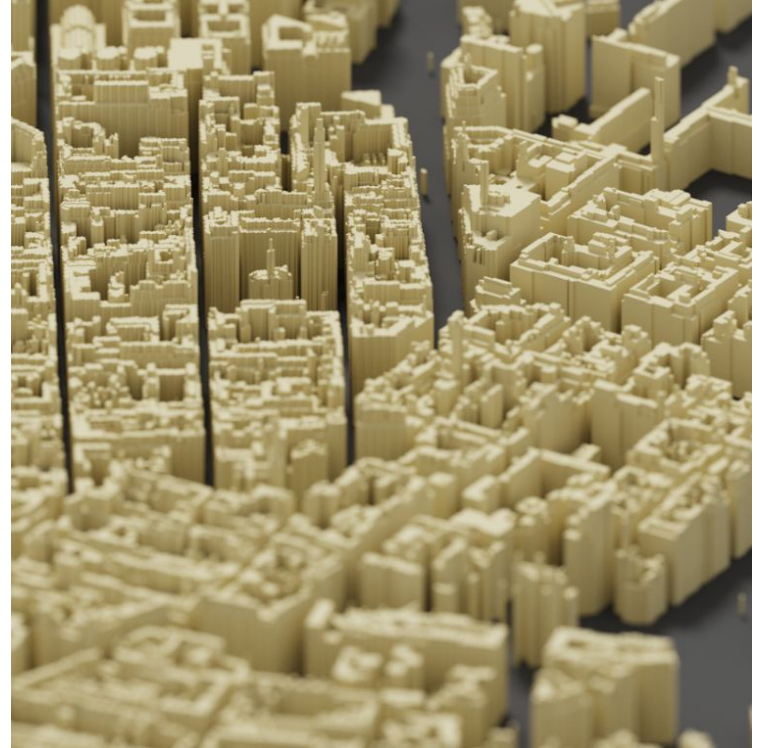


Support

- Online support service
- Why? How?
- When you don't know how to ask or the problem is confusing
- Very important to follow the learning curve

FOSS4G training in future

- Web courses
- QGIS and 3D
- City planning, architectural design
- Online mapping
- What do you think what kind of training we should pursue next?



Thank you

Contact information

- elisa@gispo.fi
- info@gispo.fi

